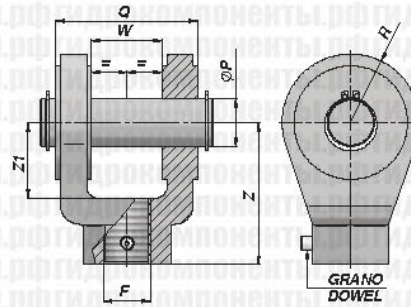
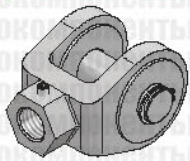


CSKLP

NEW!

РЕЗЬБОВАЯ ВИЛКА СО ШТИФТОМ - ISO 8133



Обозн.	ØP (H9)	Q	W	Z	Z1	F	R	FC (кН)	кг	Штифт
CSKLP00010	10	24	12	32	13	M10x1.25	12	8.0	0.10	CSKP000010
CSKLP00012	12	32	16	36	19	M12x1.25	17	12.5	0.18	CSKP000012
CSKLP00014	14	40	20	38	19	M14x1.5	17	20.0	0.23	CSKP000014
CSKLP00016	20	60	30	54	32	M16x1.5	29	32.0	0.90	CSKP000016
CSKLP00020	20	60	30	60	32	M20x1.5	29	50.0	0.91	CSKP000016
CSKLP00027	28	80	40	75	39	M27x2	34	80.0	1.92	CSKP000027
CSKLP00033	36	100	50	99	54	M33x2	50	125.0	4.92	CSKP000033
CSKLP00042	45	120	60	113	57	M42x2	53	200.0	6.53	CSKP000042
CSKLP00048	56	140	70	126	63	M48x2	59	320.0	10.11	CSKP000048
CSKLP00064	70	160	80	168	83	M64x3	78	500.0	19.20	CSKP000064
CSKLP00080	70	160	80	168	83	M80x3	78	500.0	18.42	CSKP000064

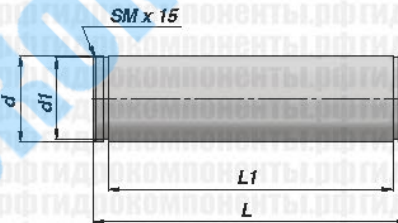
FC = МАКС. ДИНАМИЧЕСКАЯ НАГРУЗКА

МАТЕРИАЛ: СТАЛЬ S355JR UNI EN 10025

CSKP

NEW!

ШТИФТ ДЛЯ СКОБЫ- ISO 8133



Обозн.	Ød (H8)	L	Ød1	Li	кг	Для вилки
CSKP000010	10	34	9.6	29	0.02	CSKLP000010
CSKP000012	12	43	11.5	37	0.04	CSKLP000012
CSKP000014	14	51	13.4	45	0.06	CSKLP000014
CSKP000016	20	73	19.0	66	0.18	CSKLP000016 - CSKLP000020
CSKP000027	28	95	26.6	87	0.46	CSKLP000027
CSKP000033	36	117	34.0	107	0.93	CSKLP000033
CSKP000042	45	139	42.5	129	1.74	CSKLP000042
CSKP000048	56	161	53.0	149	3.11	CSKLP000048
CSKP000064	70	181	67.0	169	5.47	CSKLP000064 - CSKLP000080

МАТЕРИАЛ: СТАЛЬ PR 80 (35SMnPb10)/C40